

Safeguarding Policy: Summary

For the Protection of Children and Adults with Care and Support Needs

Amended version: 2017



safeguarding@knighton.org.uk

Safeguarding is the action we take to promote the welfare of children and vulnerable adults and protect them from harm – it is everyone's responsibility. Everyone who comes into contact with children, families and vulnerable adults has a role to play.

All leaders of groups that work with children and vulnerable adults will be provided with specific information and guidance from the full policy that relates to their area of work. We recommend that workers and volunteers familiarise themselves with the full policy and attend regular training.

This summary will focus only on the correct procedure for dealing with an allegation, disclosure or cause for concern.

These are the key contacts you need to know:

The Safeguarding Coordinator for KFC is **Ruth Cromwell**.

- Responsible for reporting concerns of abuse to the statutory authorities, and ensuring that the Safeguarding Policy is followed.

The Deputy Safeguarding Co-ordinator is **Debbie Hill**.

- Acts in the absence or unavailability of the Safeguarding Co-ordinator.

The Lead Recruiter is **Debbie Hill**.

- The main point of contact between KFC and the Churches Child Protection Advisory Service (CCPAS), and completes all Disclosure Checks (previously known as CRB checks) and associated documentation.

KFC is a member of **CCPAS** for safeguarding advice and for DBS checking. Their confidential 24 hour helpline is: **0845 120 4550**.

CEOP (Child Exploitation and On-line Protection): www.ceop.police.uk. CEOP works in the UK and internationally in co-ordinating and investigating on-line crime against children.

Children can contact **Childline** on 0800 1111.

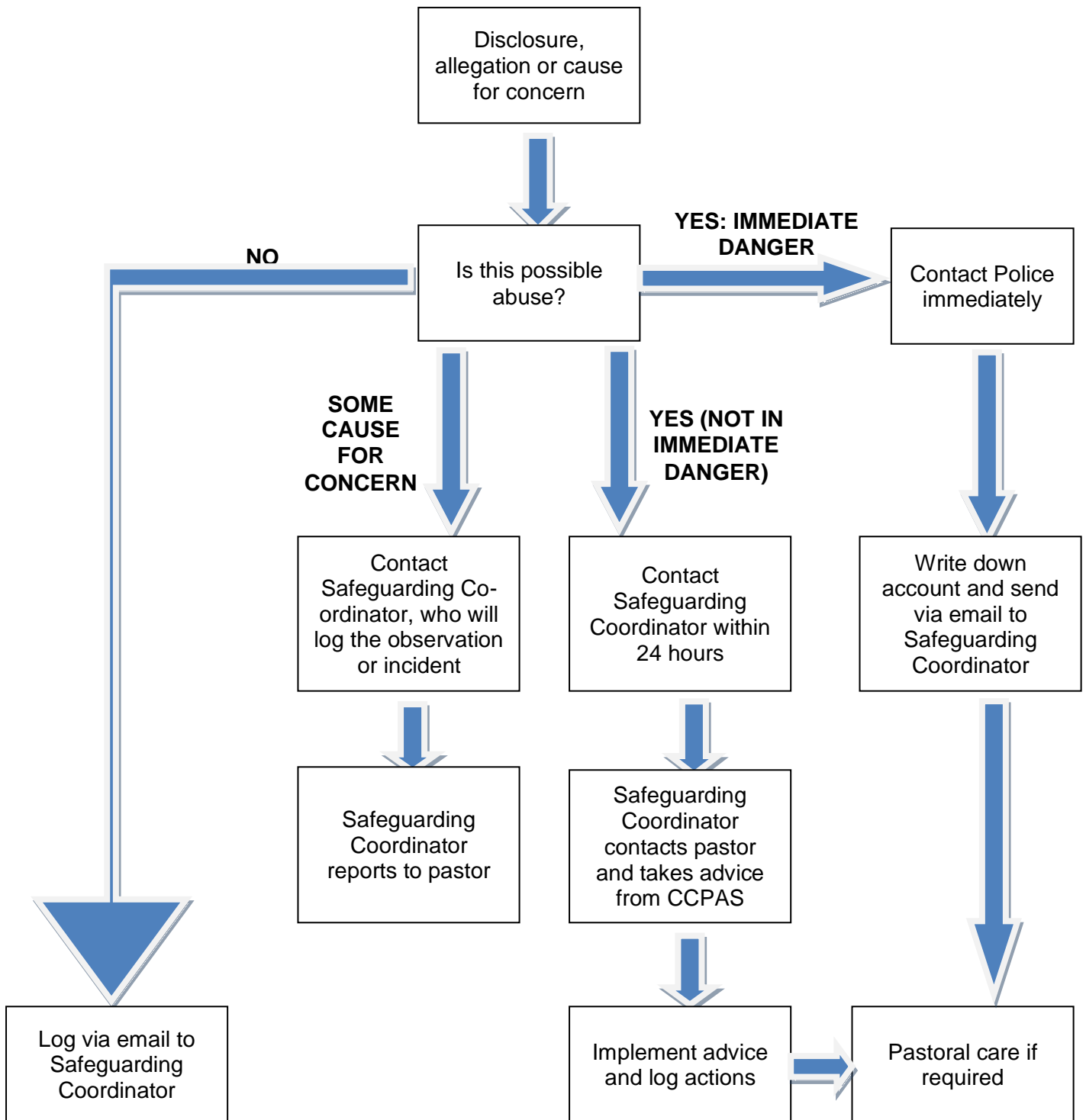
Advice on self-harm can be found at www.selfharm.co.uk.

Adult / Children and Young People's Service, Leicester City Council
Halford House, 91 Charles Street
Leicester LE1 1HL
Telephone: 0116 454 1004 (open 24/7)

Police: 0116 222 2222, or 999 in emergencies.

Correct procedure for dealing with an allegation, disclosure or cause for concern

This flow chart should be used as a guide for decision making in the event of a disclosure, allegation or concern about a child or adult with care and support needs.



REMEMBER: IF IN DOUBT ASK THE SAFEGUARDING CO-ORDINATOR (RUTH CROMWELL) OR HER DEPUTY IN HER ABSENCE (DEBBIE HILL)

OR PHONE IN CONFIDENCE **CCPAS: 0845 120 4550**

safeguarding@knighton.org.uk